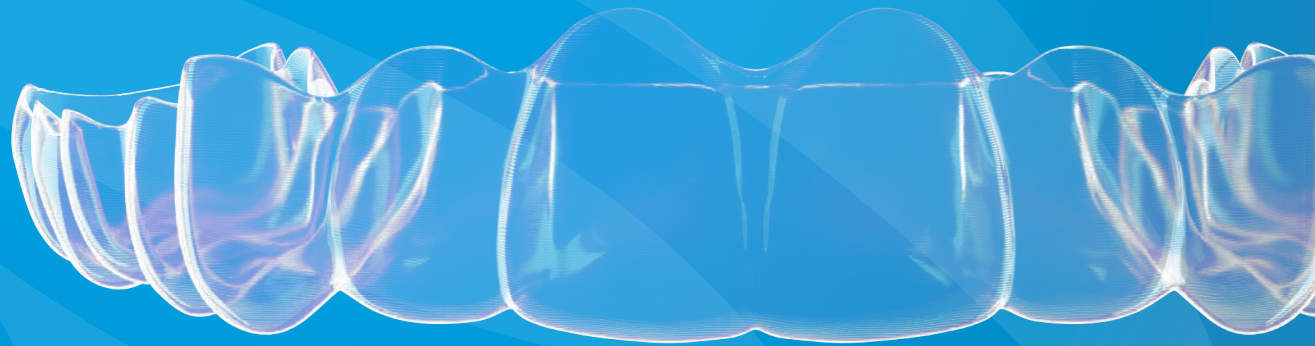




Join the
Smile Evolution



Angel Aligner fits into your world not the other way around.

Advanced Solutions | Flexible Features | Intuitive Software



Hear what doctors are saying about Angel

20+
years

of innovation
& research

1+
million

smiles

70%
of cases treated
are complex

9+
/10

case score designs
by US Orthos

ios

flexibility

20+ years of innovation 1+ million+ smiles

Angelalign Technology Inc. is a leading global provider of advanced clear aligner technology and evidence-based clinical expertise.

Since 2003, we have maintained a productive and scientific collaboration with orthodontists around the world, enabling us to build one of the largest databases of complex orthodontic cases.

■ Foundation of Angel Aligner

■ New Technology Launches

■ RnD, Production & Market Expansion

- 2003 ■ - Angel Aligner was founded
- 2006 ■ - Commenced commercialization of clear aligners and granted clear aligner technology patent in China
- 2007 ■ - Built the 1st 3D printing production for clear aligners in China
- 2011 ■ - Applied 3D printing technology to mass standardized production
- 2013 ■ - iOrtho™ Tx platform
- 2015 ■ - Mandibular Advancement Solution - A6
■ - Premolar Extraction Solution - A7
- 2016 ■ - Soft, multi-layered polymer material - MCS
■ - Dual Material - MC
- 2018 ■ - USA FDA Approval
- 2019 ■ - Mixed Dentition
■ - Molar Distilization Solution - A8
■ - angelButton™
- 2020 ■ - Built 2nd R&D Production facility boosting capacity to #2 in Asia Pacific
- 2021 ■ - Listed on HK Stock Exchange
■ - Intelligent Root System (CBCT)
- 2022 ■ - Purchase 51% of Aditek, Brazil
- 2023 ■ - Global Expansion Europe & USA
- 2024 ■ - Expansion into Canada

iOrtho™

A secure, cloud based treatment planning software

iOrtho™ is a proprietary, intuitive software used alongside our tenured case designers to create effective treatment plans for your patients. iOrtho provides doctors with:

- User-friendly, interactive experience with 3D controls
- Accurate and precise treatment planning and diagnosis
- Tools to evaluate and adjust treatment progress

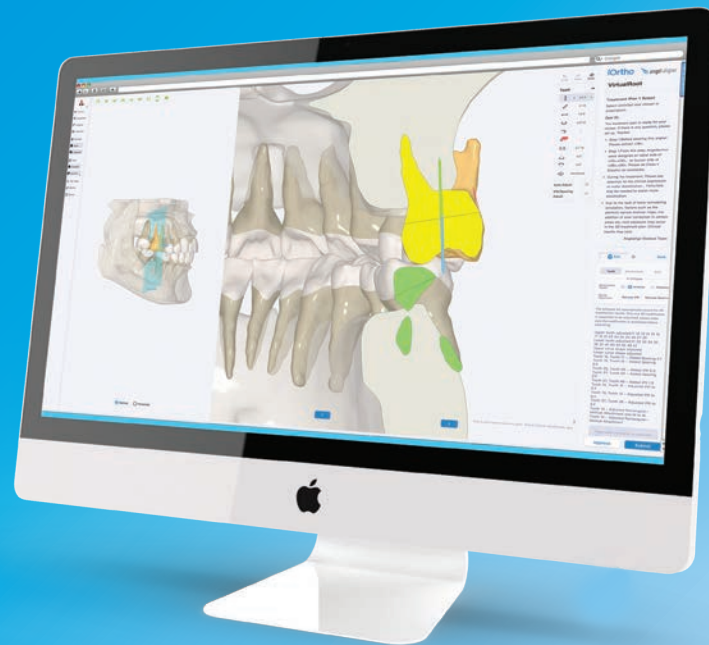
"When I first opened iOrtho, I felt like I was home. Virtually, I saw everything I am used to seeing."

~ Dr. Isaak Yelizar* - New York, NY

Highlighted Features:

Occlusal Plane Adjustment
Customize cant, rotation and inclination

angelButton™
.ai placement on labial and lingual surface



Movement Evaluation (MovE)
Identify larger tooth movements in treatment plans

Sectional Tool
Multi-dimensional movement of the teeth

IRS Intelligent Root System



True Visualization of Root Jaw Morphology

Accurately produces, rather than simulates, the morphology of your patient's root, jaw and alveolar bone via CBCT data at a ratio of 1:1.

True Analysis of Crown-Root Data

Provides you with a set of crown data and two sets of root data for a more precise view of root positions.

True Modification of Root Design

In clinical practice, doctors are enabled to modify the root and alveolar relationship, and root arrangement through the 3D Tooth Adjustment (ADJ).

"The setup with CBCT should be the gold standard for virtual treatment planning."

~ Dr. Jodi Hentscher-Johnson - Columbia, IL

ICS Intelligent Ceph System



Key Features:

- Skeletal Age Analysis
- Superimposition
- VTO – Visual Treatment Objective

Tracing based on AI:

- Automatic recognition of anatomical landmarks
- Automatic recognition of contours and auxiliary points
- Automatically identify the ruler and calculate the magnification

Ability to:

- Edit and adjust landmark point
- View measurement report
- One-click export of measurement data

Two materials for superior treatment solutions

masterControl S

MasterControl S is a multi-layer polymer material with gentle but long-lasting orthodontic force for more efficient tooth movement.

masterControl

Intelligent digital orthodontics and material science defines precise tooth movements. The MasterControl material performs well with complicated tooth movements and helps doctors accurately treat challenging cases.

MCS & MC exhibit enhanced tear and stain resistance, mechanical stability and unique reflective properties that improve the clarity of aligners while in the mouth.



Hello *angelButton*™!

The angelButton defines the future for elastic features, offering infinite possibilities for orthodontic elastic treatment.

Integrated Directly into the Aligner

Decreases clinic time by reducing the need for bonded buttons and emergency appointments for rebonding.

Continuous Force, Easy Application

The angelButton provides patients with effective, continuous force in the aligner and a comfortable and easy application.

Advanced Control and Flexibility

- angelButton and attachment can be placed on the same tooth.
- AI algorithms direct precise button placement.
- Labial and lingual placement for flexible positioning during treatment

"The iOrtho™ software is surprisingly intuitive and I find having the buttons integrated into the plastic incredibly efficient and easy to implement."

~ Dr. Chris Teeters - Peoria, AZ

Advanced Solutions

A6 Mandibular Advancement Solution

A6 Mandibular Advancement

A6 Mandibular Advancement Solution allows for the orthopedic and orthodontic phases of treatment to be combined into one phase.

A7 Solution

A7 premolar extraction solution is based on the analysis and clinical validation by masterForce platform and the treatment of hundreds of thousands of extraction cases with Angel Aligner. After years of experience treating complex extraction cases, A7 is designed to optimize the accuracy and precision of tooth movements in extraction cases.

A8 Solution

To optimize control of molar distalization, the A8 molar distalization solution combines the precise calculation of the masterForce platform, the sequential tooth movement of masterControl materials, and the angelButton attachment.



Patient Education

- Typodonts and Aligner Samples
- Patient Brochures and holder
- Treatment Coordinator Program
- Discounted Staff Program



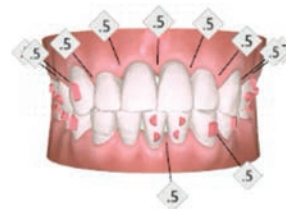
Angel Aligner Case Results with Complex Movements

Class II, Deep Overbite
Lower Incisor Extraction #31
Select Unlimited / 53 stages

INITIAL



FINAL



Class III, Anterior Cross-Bite
Select Unlimited / 48 stages

INITIAL



FINAL

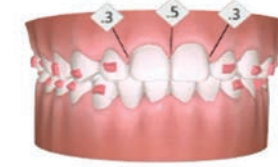


Open Bite
Pro - Dual Material / 53 stages

INITIAL



FINAL



Deep Overbite / Deep Overjet
Skeletal Class II - Non-extraction correction
Pro - Dual Material / 54 stages

INITIAL



FINAL





Learn more at angelaligner.com

ANG-002 Rev 02

*Dr. Isaak Yelizar is a paid consultant for Angel Aligners. The opinions that are quoted in this material are those of the doctor. Clinicians should use their own judgement in treating patients.

†Data on file. *The products mentioned in this brochure are not available for purchase by general public. Please read the product manual carefully and use our product under the guidance of your doctor.